

CHC

Coming
Soon

Early

Childhood

Education

and Care

CHC30121 Certificate III in Early Childhood Education and Care

CHC50121 Diploma of Early Childhood Education and Care

LEARNER GUIDES



Early Childhood Education and Care resources are available for Certificate III and the Diploma of Early Child Education and Care qualifications from the CHC Community Services Training Package.

Mapped to Competency: Content is mapped to the elements, performance criteria, performance evidence and knowledge evidence of the unit of competency

Workplace examples: Each resource includes realistic and current workplace examples and case studies providing real-life context

Practice Tasks: Practice Tasks enable learners to check their progress

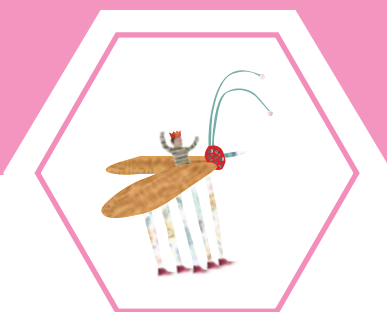
Topic Summaries: Summaries at the end of each topic review key learning topics

Learning Checkpoints: Learning Checkpoints allow students to test what they've learned

Available in print, eBook or a licensing subscription format.

ASSESSMENT SUPPORT PACKS

For the Student



Practice Assessment Workbook: The Practice Assessment Workbook includes all Practice Tasks, Case Studies and Learning Checkpoints from the Learner Guide

Final Assessment Workbook: The Final Assessment Workbook includes all the Final Assessment tasks, including:

- Questions
- Project
- Observation checklist*
- Third party report*

*where the Unit of Competency requires an Observation be undertaken

Supporting documents: Supporting documents help learners complete the Final Assessment tasks

The Practice Assessment Workbook and Final Assessment Workbooks are in MSWord format for easy use.

ASSESSMENT SUPPORT PACKS

For the Assessor



Practice Assessment Marking Guide: The Practice Assessment Marking Guide includes suggested solutions to all the assessments in the Learner Guide

Talk with Others: A Talk with Others section is also included to promote classroom discussion

Final Assessment Marking Guide: The Final Assessment Marking Guide includes suggested solutions to the Final Assessment tasks

Third-Party Report: The Third-Party Report helps the workplace supervisor observe and monitor the student undertake a task in a workplace setting

Mapping Spreadsheet: The Competency Mapping spreadsheet maps the learning content and assessments to each element, performance criteria, performance evidence and knowledge evidence of the unit of competency

PowerPoint Slides: PowerPoint slides summarise key concepts and contain live links and additional discussion questions to encourage further learning

Delivery Plans: Delivery Plans support the TAS by providing an estimated time to deliver each Topic; suggested training strategies; and discussion topics at the end of each Topic.

STUDENT WORKPLACE JOURNALS



Student Workplace Journals for:

CHC30121 Certificate III in Early Childhood Education and Care

CHC50121 Diploma of Early Childhood Education and Care

The Student Workplace Journal is for students to record and reflect on activities undertaken as part of their work placement in a childcare service.

- Self-reflection tables for students to record professional skills with space for the supervisor to add their comments
- Features an example of a resumé that shows students how to express all of their skills, knowledge and experience
- A customisable document that can be easily adapted to suit to your learner cohort
- A once-off purchase that can be reproduced as often as required

Our Partner

ONE WORLD FOR CHILDREN



Aspire's Early Childhood Education and Care resources are co-developed with award-winning childcare practitioners and trainers at One World for Children: an industry-based RTO and childcare centre with over 20 years' experience as childcare educators.

One World for Children and Aspire Learning Resources began collaborating in 2006. Together, we develop innovative training and assessment resources that take a whole-child focus and showcase real-life childhood education scenarios. Our comprehensive approach is based on current industry practice and helps students become job-ready for a productive career.

Drawing on a wealth of experience in real work environments, Aspire's resources capture first-class industry knowledge and practices that reflect the passion of leading childcare experts.

Pricing and Purchasing Options

Qualifications

CHC30121 Certificate III in Early Childhood Education and Care
Requirements: 17 units – 15 core and 2 electives

CHC50121 Diploma of Early Childhood Education and Care
Requirements: 15 units – 12 core and 3 electives

Pricing

Print	Price
Learner Guides.	\$18.00 ea
eBook	Price
Leaner eBook. To purchase eBooks, visit myconnectshop.campion.com.au .	\$16.50 ea
Assessment Support Packs	Price
Available for each tile. Supplied as downloadable Word files.	\$550.00 ea
PowerPoint Slides	Price
Available for each title. To purchase, contact Aspire.	\$195.00 ea
Student Workplace Journal	Price
One-off purchase. Available for each Certificate III and Diploma qualification.	\$495.00 ea

ISBN	CODE	TP RELEASE *	TITLE	CHC30121	CHC50121
978 1 76075 375 7	BSBSUS511	R1	Develop workplace policy and procedures for sustainability		E
978 1 76075 371 9	BSBTWK502	R1	Manage team effectiveness		C
978 1 76075 383 2	CHCDIV001	R1	Work with diverse people	E	
978 1 76075 387 0	CHCDIV003	R1	Manage and promote diversity		E
978 1 76075 391 7	CHCECE030	R1	Support inclusion and diversity	C	
978 1 76075 395 5	CHCECE031	R1	Support children's health, safety and wellbeing	C	
978 1 76075 399 3	CHCECE032	R1	Nurture babies and toddlers	C	
978 1 76075 403 7	CHCECE033	R1	Develop positive and respectful relationships with children	C	
978 1 76075 407 5	CHCECE034	R1	Use an approved learning framework to guide practice	C	
978 1 76075 411 2	CHCECE035	R1	Support the holistic learning and development of children	C	
978 1 76075 415 0	CHCECE036	R1	Provide experiences to support children's play and learning	C	
978 1 76075 419 8	CHCECE037	R1	Support children to connect with the natural environment	C	
978 1 76075 423 5	CHCECE038	R1	Observe children to inform practice	C	
978 1 76075 427 3	CHCECE041	R1	Maintain a safe and healthy environment for children		C
978 1 76075 431 0	CHCECE042	R1	Foster holistic early childhood learning, development and wellbeing		C
978 1 76075 435 8	CHCECE043	R1	Nurture creativity in children		C
978 1 76075 439 6	CHCECE044	R1	Facilitate compliance in an education and care service		C
978 1 76075 443 3	CHCECE045	R1	Foster positive and respectful interactions and behaviour in children		C




ISBN	CODE	TP RELEASE *	TITLE	CHC30121	CHC50121
978 1 76075 447 1	CHCECE046	R1	Implement strategies for the inclusion of all children		C
978 1 76075 451 8	CHCECE047	R1	Analyse information to inform learning		C
978 1 76075 455 6	CHCECE048	R1	Plan and implement children's education and care curriculum		C
978 1 76075 459 4	CHCECE049	R1	Embed environmental responsibility in service operations		C
978 1 76075 463 1	CHCECE050	R1	Work in partnership with children's families		C
978 1 76075 467 9	CHCECE054	R1	Encourage understanding of Aboriginal and/or Torres Strait Islander Peoples cultures	C	
978 1 76075 471 6	CHCECE055	R1	Meet legal and ethical obligations in children's education and care	C	
978 1 76075 379 5	CHCECE056	R1	Work effectively in children's care and education	C	
978 1 76075 475 4	CHCINM002	R1	Meet community information needs		E
978 1 92246 600 6	CHCPOL003	R1	Research and apply evidence to practice		E
978 1 76075 479 2	CHCPRP003	R1	Reflect on and improve own professional practice	E	C
978 1 76075 483 9	CHCPRT001	R1	Identify and respond to children and young people at risk	C	
978 1 76075 487 7	HLTWHS001	R1	Participate in workplace health and safety	C	
978 1 76075 495 2	GECWPJ3		Student Workplace Journal - Certificate III		
978 1 76075 496 9	GECWPL5		Student Workplace Journal - Diploma		

*The R# relates to the Training Package version, for example R1 = Release 1, R2 = Release 2

Please note: Aspire has not developed HLTAID004 Provide an emergency first aid response in an education and care setting

Developed in partnership with One World for Children

W: aspirelr.com.au P: 03 9820 1300 E: sales@aspirelr.com.au

   **@aspirelr** Purchasing our resources helps fund the Aspire Foundation

